



GMT MONTHLY MEMBERSHIP PROGRESS REPORT

Results as of: 6/30/2020

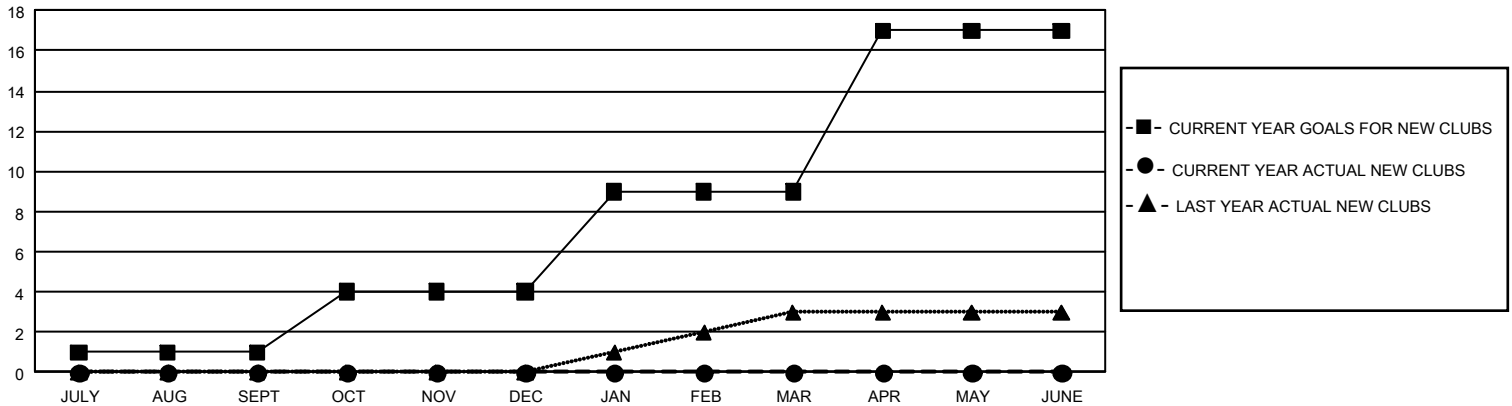
GMT Constitutional Area 5 - J, Group H

GMT: OPEN

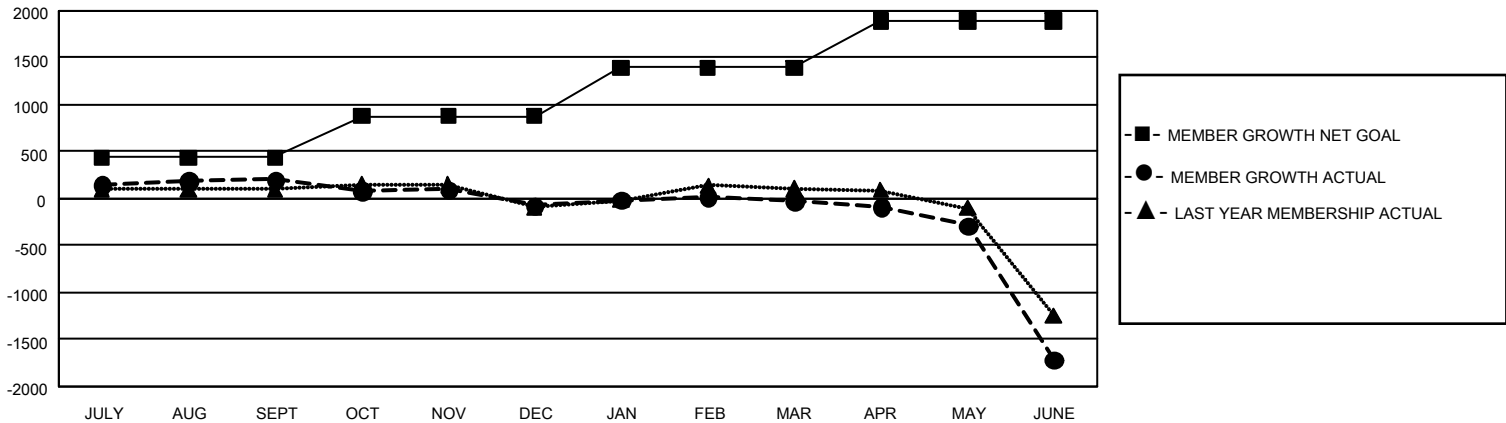
REPORT DOES NOT INCLUDE CLUBS IN UNDISTRICTED AREAS.

Clubs				Members			
RESULTS FOR 2019-2020				RESULTS FOR 2019-2020			
QUARTER	NEW CLUB GOAL	NEW CLUBS	DROPPED CLUBS	QUARTER	MEMBER GROWTH NET GOAL	MEMBER GROWTH ACTUAL	DROPPED MEMBERS ACTUAL (including transfers)
JULY/AUG/SEPT	3	0	0	JULY/AUG/SEPT	1,314	690	436
OCT/NOV/DEC	9	0	2	OCT/NOV/DEC	1,329	267	536
JAN/FEB/MAR	15	0	4	JAN/FEB/MAR	1,539	428	344
APR/MAY/JUNE	24	0	17	APR/MAY/JUNE	1,494	163	1,831

GOALS AND ACTUAL NEW CLUBS CUMULATIVE



GOALS AND ACTUAL MEMBERS CUMULATIVE



DROPPED CLUBS: 23

465 CLUBS OF 720 ADDED 1 OR MORE NEW MEMBERS

GENDER DISTRIBUTION

MALE 18,317 (75.03%)
FEMALE 6,097 (24.97%)

DROPPED MEMBERS

DECEASED	186
CLUB CANCELLED	125
OTHER	2,836
TOTAL	3,147

[CLICK HERE FOR CUMULATIVE MEMBERSHIP DATA](#)

TOTAL FAMILY UNIT MEMBERS 10,281

FAMILY MEMBERS PAYING HALF DUES 5,641